

# INFORMATION SESSION

*Tour de Suisse 2022*



# Outline

**Part 1:** CLARIN Europe

.....

**Part 2:** What is CLARIN-CH?

.....

**Part 3:** Developing CLARIN-CH

.....

**Part 4:** Benefits

.....

**Part 5:** Our roadmap

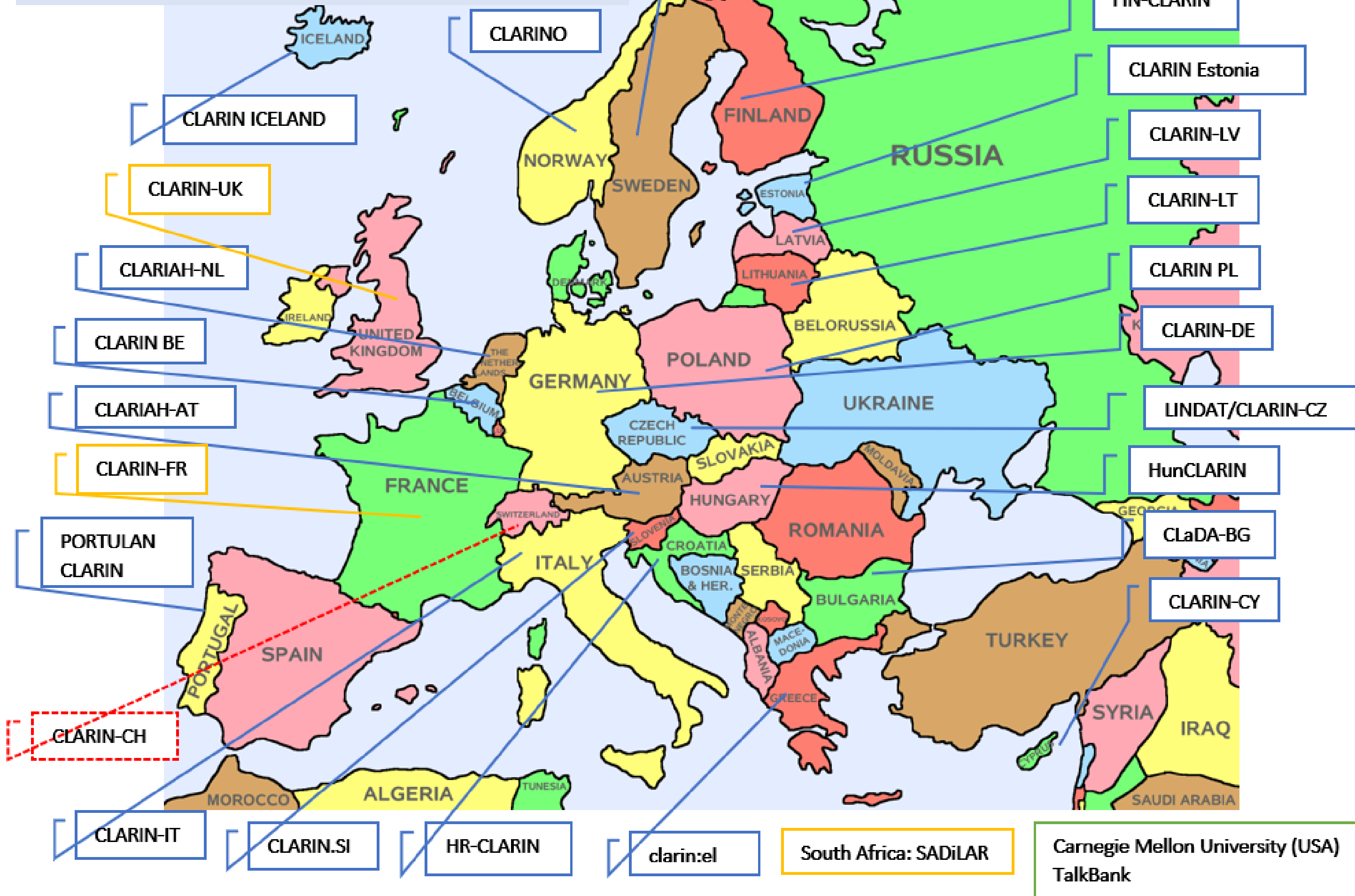
# The research infrastructure for language as social and cultural data

CLARIN is a digital infrastructure offering data, tools and services to support research based on language resources.

## SOME FACTS:

- Designed and implemented between 2008–2012 by 9 founding countries, and fully operational since 2016.
- Included in the *European Strategy Forum on Research Infrastructures* (ESFRI) in 2016.
- The CLARIN infrastructure is governed and coordinated by CLARIN ERIC – a consortium of countries, represented by their research and education ministries.
- Currently, 26 European countries are members of CLARIN. Switzerland is in the process of joining the CLARIN Consortium.

**CLARIN Full and Observer Members,  
as well as Third Party**



**CLARIN's vision:**

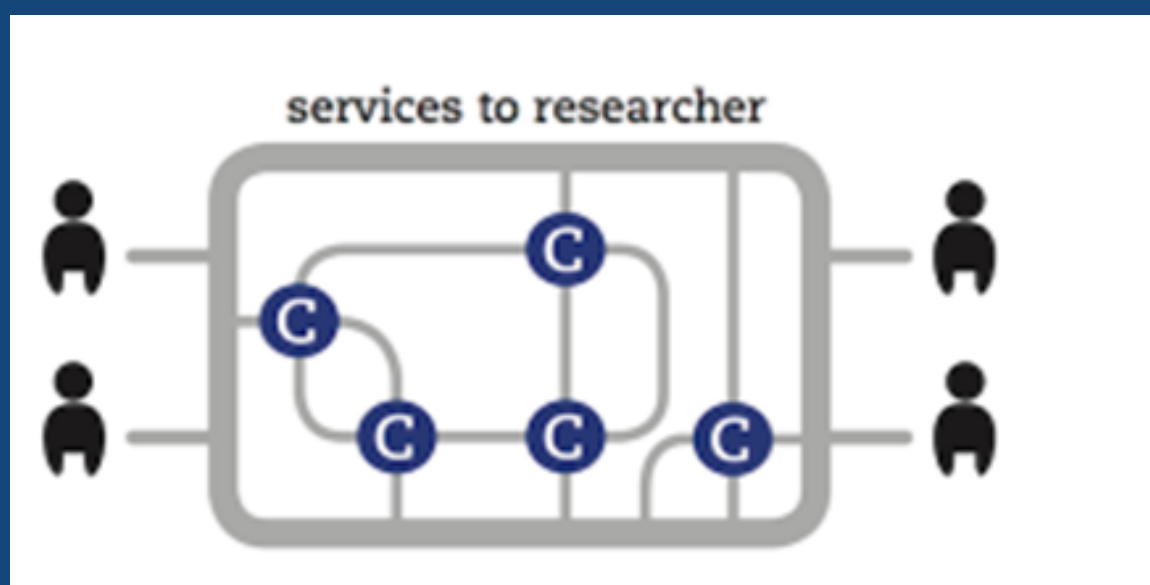
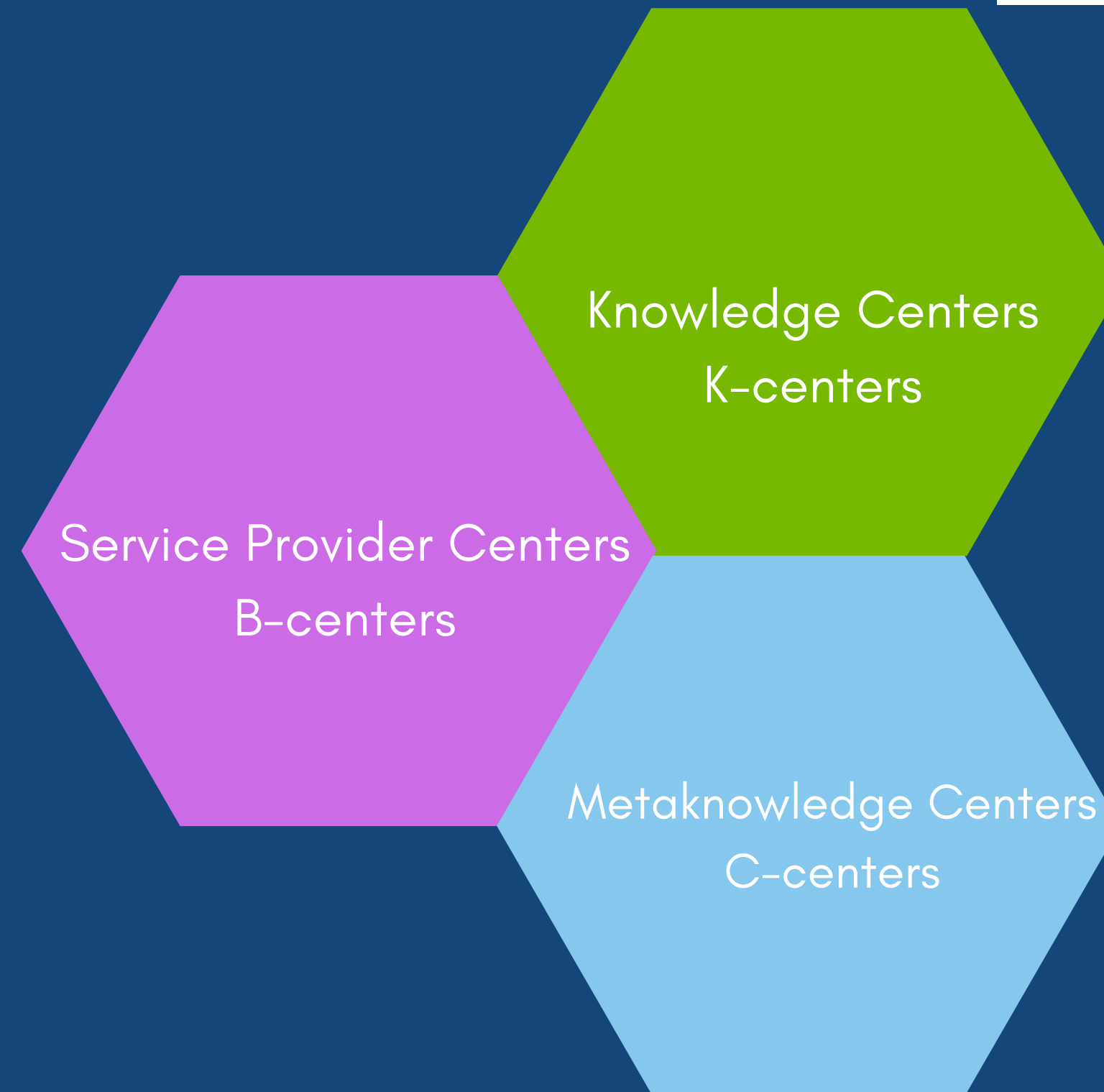
*Render accessible all digital language resources and tools from all over Europe through a single sign-on online environment.*

**CLARIN's mission:**

*Create and maintain an infrastructure to support the sharing, use and sustainability of language data and tools for research in the SSH.*



CLARIN is a **networked federation of centers**—academic and research institutions that offer the scientific community expertise, resources, tools and services.



Researchers are service-users and service-providers



Website	<a href="http://www.ids-mannheim.de/">http://www.ids-mannheim.de/</a>
Consortium	CLARIN-D
Type(s)	B
Type status	Certified
Description	Providing long-term storage of Germanic language resources.
CoreTrustSeal/DSA	seal
PID status	Handle (own server and prefix: 10932).
Repository system	Fedora Commons

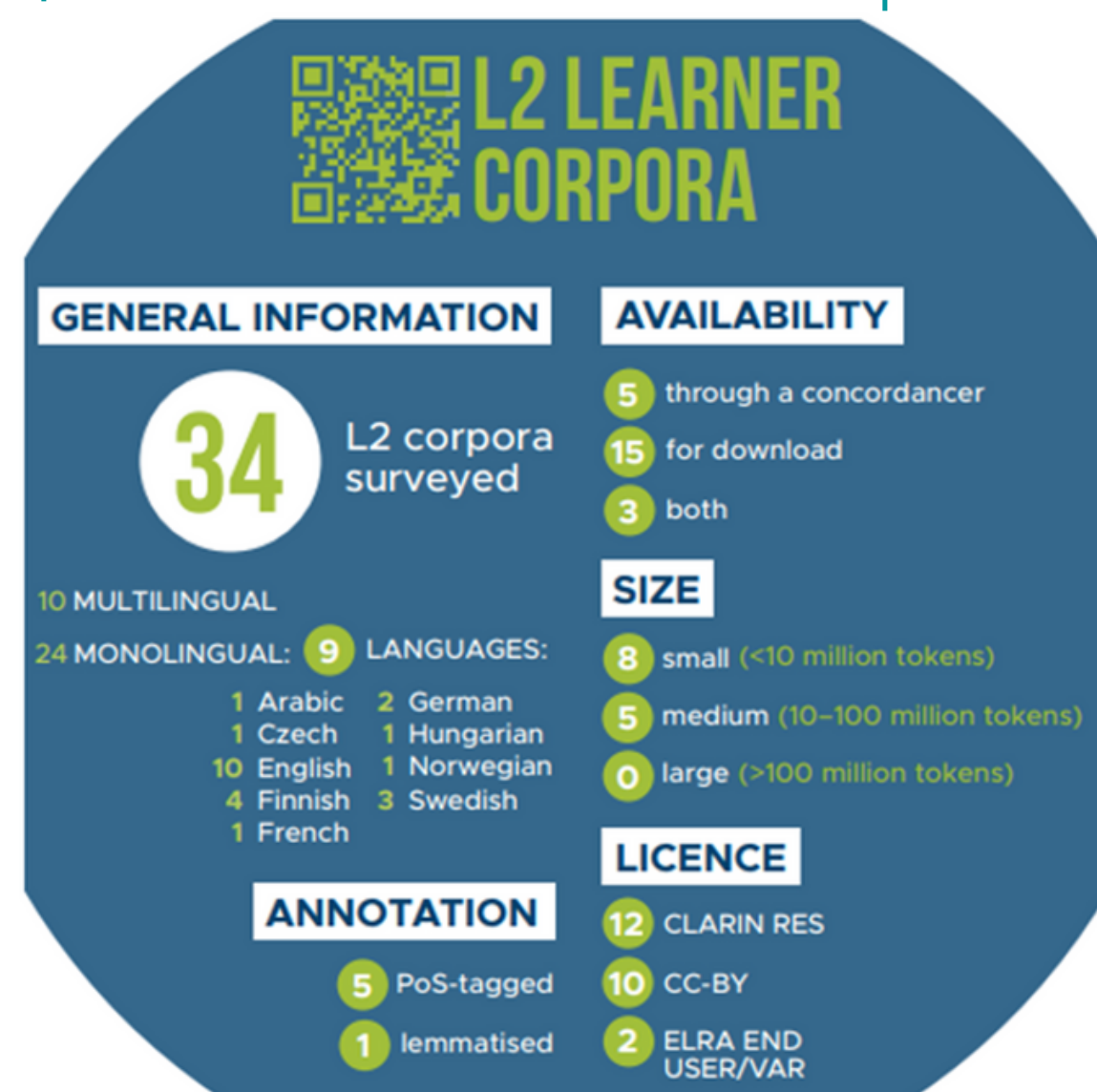
Full name	CORLI French CLARIN Knowledge Centre for Corpora, Languages and Interaction
Short name	CORLI-K-centre
URL	<a href="https://corli.huma-num.fr/en/kcentre/">https://corli.huma-num.fr/en/kcentre/</a>
Hosted by	(1) Huma-Num / CNRS UMS 3598, Paris, France
City of main hub	Paris
Country of main hub	FR
Date of certification	2020-07-14
Area of competence	Corpus linguistics with a special focus on the French language and the languages of France
Audiences	<ul style="list-style-type: none"> <li>- Linguists</li> <li>- Sociolinguists</li> <li>- Language teachers</li> <li>- Computational linguists</li> <li>- Literature</li> <li>- Language diachrony</li> </ul>
Types of services	- How-to documents
Language portal for	- French
Other languages covered	<ul style="list-style-type: none"> <li>- LSF (French Sign Language)</li> <li>- Old French</li> </ul>
Modalities covered	<ul style="list-style-type: none"> <li>- Audio: speech</li> <li>- Audio-visual</li> <li>- Text</li> </ul>
Linguistic topics	<ul style="list-style-type: none"> <li>- Format and tools for corpus studies</li> <li>- Multilingual, multimodal corpora</li> </ul>
Language processing topics	- Corpus format and tools for creating and analysis corpora
Data types	<ul style="list-style-type: none"> <li>- Text</li> <li>- TEI</li> <li>- Spoken language</li> <li>- Video</li> </ul>
Resource families	
Generic topics	- Legal issues
Other keywords	- Continuous education



## Corpora

- Computer-mediated communication corpora
- Corpora of academic texts
- Historical corpora
- **L2 learner corpora**
- Literary corpora
- Manually annotated corpora
- Multimodal corpora
- **Newspaper corpora**
- Parallel corpora
- Parliamentary corpora
- Reference corpora
- Spoken corpora

## Resources





## Monolingual L2 learner corpora in the CLARIN infrastructure

### Written corpora

Corpus	Language	Description	Availability
<a href="#">CzeSL – Czech as a Second Language</a>  <b>Size:</b> 0.9 million words  <b>Annotation:</b> tokenised, PoS-tagged, lemmatised, error labels  <b>Licence:</b> CC-BY	Czech	This corpus contains essays written in 2013 by learners from 54 L1 backgrounds.  The corpus is available for download from LINDAT.  For the relevant publication, see <a href="#">Rosen (2016)</a> .	<a href="#">Download</a>
<a href="#">British Academic Written English Corpus</a>  <b>Size:</b> 2761 texts  <b>Licence:</b> CC-BY	English	This is primarily a L1 corpus although it also contains L2 texts.  The corpus is available for download from the University of Oxford Text Archive.	<a href="#">Download</a>

<a href="#">English Scientific Text Corpus</a>  <b>Size:</b> 35 million tokens  <b>Annotation:</b> PoS-tagged, lemmatised, author/text metadata, document structure  <b>Licence:</b> restricted	English	This corpus contains journal articles in the following disciplines: <ul style="list-style-type: none"> <li>• computer science,</li> <li>• computational linguistics,</li> <li>• informatics,</li> <li>• digital construction,</li> <li>• microelectronics,</li> <li>• linguistics,</li> <li>• biology,</li> <li>• mechanical engineering, and</li> <li>• electrical engineering.</li> </ul> <p>The articles were published in the 1970s, 1980s and the 2000s.</p> <p>The corpus is available for online querying through CQPWeb (CLARIN-D distribution).</p> <p>For the relevant publication, see <a href="#">Degaetano-Ortlieb et al. 2013</a></p>	<a href="#">Concordancer</a>
---	---------	---	------------------------------

The access to the various resources depends on their type of licence.

<https://www.clarin.eu/resource-families>

## Lexical resources

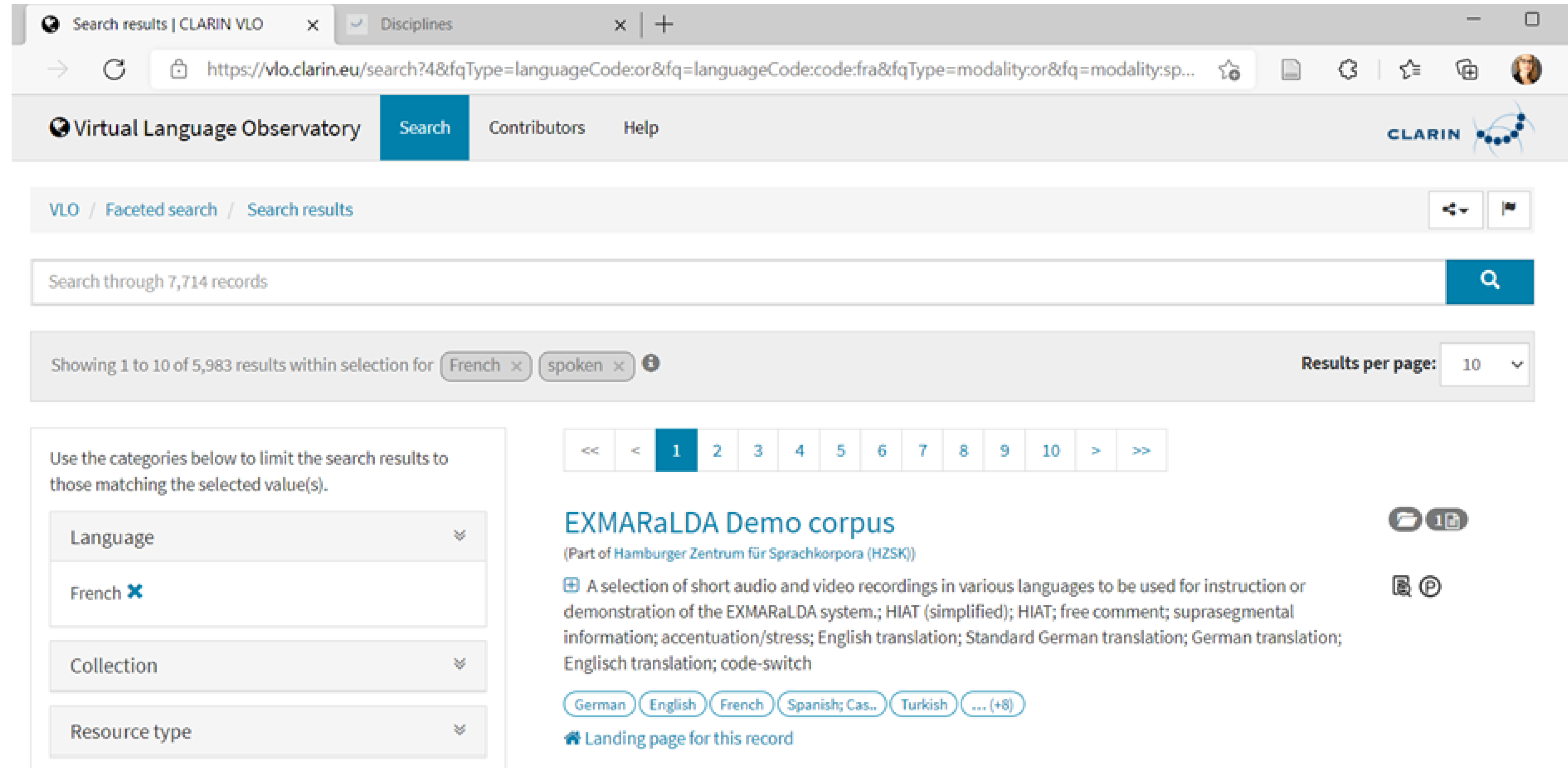
- **Lexica**
- Dictionaries
- Conceptual Resources
- Glossaries
- Wordlists



<a href="#">EngVallex</a>	English	This is a valency lexicon linked to the English side of the PCEDT corpus (WSJ corpus). The resource is available for download from LINDAT and for online browsing.	<a href="#">Browse</a> <a href="#">Download</a>
<hr/>			
<a href="#">The Database of Estonian Multi-Word Expressions</a>	Estonian	This is a collection of lexica that contain multi-word expressions consisting of a verb and a particle or a verb and its complements. The resource is available for download from <a href="#">META-SHARE</a> (CELR distribution) and for online browsing through a dedicated website.	<a href="#">Browse</a> <a href="#">Download</a>
<hr/>			
<a href="#">Démonette</a>	French	This is a morphological lexicon available for download from ORTOLANG.	<a href="#">Download</a>
<hr/>			
<b>Size:</b> 4,337 entries, 7,148 frames			
<b>Annotation:</b> verb valency			
<b>Licence:</b> CC-BY-NC-SA 4.0			
<hr/>			
<b>Size:</b> 12,500 words			
<b>Licence:</b> proprietary			
<hr/>			
<b>Size:</b> 96,027 entries			
<b>Annotation:</b> MSD-tags (grace format), semantic types			
<b>Licence:</b> CC-BY 4.0			

CLARIN language resources can be explored via the individual repositories and via an **unified catalogue**: the **Virtual Language Observatory**

# Resources



Search results | CLARIN VLO | Disciplines

https://vlo.clarin.eu/search?4&fqType=languageCode:or&fq=languageCode:code:fra&fqType=modality:or&fq=modality:sp...

Virtual Language Observatory Search Contributors Help

VLO / Faceted search / Search results

Search through 7,714 records

Showing 1 to 10 of 5,983 results within selection for French spoken

Results per page: 10

Use the categories below to limit the search results to those matching the selected value(s).

Language

French

Collection

Resource type

EXMARaLDA Demo corpus

(Part of Hamburger Zentrum für Sprachkorpora (HZSK))

A selection of short audio and video recordings in various languages to be used for instruction or demonstration of the EXMARaLDA system.; HIAT (simplified); HIAT; free comment; suprasegmental information; accentuation/stress; English translation; Standard German translation; German translation; Englisch translation; code-switch

German English French Spanish; Cas.. Turkish ... (+8)

Landing page for this record

<https://vlo.clarin.eu/?2#>

## Access to **protected resources**

Thanks to a *federated login* – one's institutional credentials – researchers can gain access to protected tools and data sets.

- This functions automatically for academics from all member countries.
- For Switzerland, this will be possible starting with 2023.

Resource or Tool	Description	Provided by
<a href="#">Bavarian Archive for Speech Signals</a>	Mostly German spoken language resources	Bayerisches Archiv für Sprachsignale
<a href="#">CLARIN-DK repository</a>	Danish language resources	The Clarin center at University of Copenhagen
<a href="#">CLARIN.SI repository</a>	Includes a.o. the following corpora: <ul style="list-style-type: none"> <li>• <a href="#">Croatian-English parallel corpus hrenWaC 2.0</a></li> <li>• <a href="#">Finnish-English parallel corpus fienWaC 1.0</a></li> <li>• <a href="#">Serbian-English parallel corpus srenWaC 1.0</a></li> <li>• <a href="#">Slovene-English parallel corpus slenWaC 1.0</a></li> </ul>	CLARIN.SI Language Technology Centre

## Resources

# Tools to discover, explore, exploit, annotate, analyse or combine language data.

- Text normalization
- Named entity recognition
- Part-of-speech tagging and lemmatization
- Sentiment analysis and opinion mining

## Text normalization

**PICCL:** Philosophical Integrator of Computational and Corpus Libraries

**Functionality:** OCR, normalisation, tokenisation, dependency parsing, shallow parsing, lemmatisation, morphological analysis, NER, PoS-tagging

**Domain:** independent

Dutch, Swedish, Russian, Spanish, Portuguese, English, German, French, Italian, Finnish, Modern Greek, Classical Greek, Icelandic, German (Fraktur), Latin, Romanian

This is a set of workflows for corpus building through OCR, post-correction, modernisation of historic language and Natural Language Processing. It combines [Tesseract Optical Character Recognition](#), [TICCL](#) and [FROG](#) functionality in a single pipeline.

- **Availability:** [download](#)
- **CLARIN Centre:** CLARIAH-NL
- **Platform:** cross-platform
- **Input format:** images (tiff, vnd.djvu), plain text, xml
- **Output formal:** FoLiA XML
- **Publication:** Reynaert et al. (2015)

Tools



# Tools

## PoS-tagging and lemmatization

[Sparv](#)

**Functionality:** PoS, MSD, lemma, compound analysis, dictionary lookup

Bulgarian, English, Estonian, Finnish, French, Galician, Italian, Catalan, Latin, Dutch, Norwegian, Polish, Portuguese, Romanian, Russian, Slovak, Slovenian, Spanish, Swedish, German

This tool is [Språkbanken](#)'s corpus annotation pipeline infrastructure. The pipeline uses in-house and external tools on the text to segment it into sentences and paragraphs, tokenise, tag parts-of-speech, look up in dictionaries and analyse compounds. The pipeline can also be run using a web API with XML results, and it is run locally to prepare the documents in [Korp](#), which is SWE-LANG's corpus search tool. While the most sophisticated support is for modern Swedish, the pipeline supports additional 19 languages.

**Availability:** [web application](#), [web API](#)

**Input:** plain text, XML

**Output:** plain text, XML

**CLARIN Centre:** SWE-CLARIN

**Related publication:** Borin et al. ([2016](#))

## Named entity recognition

[GATE](#)

**Functionality:** tokenization, PoS-tagging, NER, semantic and orthographic coreference, pronominal coreference

English, French, German, Romanian, Russian, Welsh, Danish, Chinese, Arabic

This is a complete NLP platform with modules for named entity recognition.

**Availability:** [download](#), [online service](#)

**CLARIN Centre:** CLARIN-UK

**NER categories:** person, location, organisation, date, percent, money

**Publication:** Cunningham et al. ([2019](#))

**Platform:** cross-platform

**Licence:** LGPL

CLARIN **Knowledge** Centers (K-centers) share their knowledge and expertise on one or more aspects of the domain covered by the CLARIN infrastructure.

K-centers have their own specific areas of expertise, which can belong to many different categories, such as:

- **Individual languages** (e.g. Danish, Czech, Portuguese)
- **Language families** (e.g. South Slavic)
- **Groups of languages** (e.g. morphologically rich languages, the languages of Sweden)
- **Written text and modalities other than written text** (e.g. spoken language, sign language)
- **Linguistic topics** (e.g. language diversity, language learning, diachronic studies)
- **Language processing topics** (e.g. speech analysis, building treebanks, machine translation)
- **Data types other than corpora** (e.g. lexical data, word nets, terminology banks)
- **Using or processing families of language data** that will exist for most languages (e.g. newspapers, parliamentary records, oral history)
- **Generic methods and issues** (e.g. data management, ethics)

<https://www.clarin.eu/content/knowledge-centres>

Expertise

# Services

1. **Services** provided by K-centers can take different shapes:

- Online courses
- Training materials
- Best-practice documents
- Guidance in getting access to and using data and tools
- Hosting of receivers of CLARIN mobility grants

2. **Digital Humanities Course Registry** (CLARIN & DARIAH): an online platform for announcing and finding DH courses across Europe.

3. The **CLARIN Trainer Network Programme**: training events carried out by a group of experts at prominent summer schools, conferences, COST Actions, etc. in disciplines and communities relevant for CLARIN, such as linguistics, digital humanities, language technologies and social sciences.

4. **Depositing Services:** researchers can store language resources in a sustainable repository at a CLARIN centre.

5. The **VideoLectures.net** video channel: an online library of talks (synchronised with their corresponding slides) and tutorials from the CLARIN training and academic events.

6. **Technical webservice:**

- The *Language Resource Switchboard*: a tool that helps to find a matching language processing web application for a set of data.
- *Weblicht*: an execution environment for automatic annotation of text corpora, built by CLARIN-D. Linguistic tools (e.g. tokenizers, speech taggers, parsers) are encapsulated as web services, which can be combined by the user into custom processing chains. The resulting annotations can then be visualized in an appropriate way, such as in a table or tree format.
- Other individual web services proposed by certain CLARIN centers.

<https://www.clarin.eu/content/language-resource-switchboard>

**1. Funding opportunities:** CLARIN has developed funding and support instruments for their members to address strategic priorities that require cross-country collaboration, exchange of expertise, training or mobility.

- Bridging Gaps Call
- Resource Families Project Funding
- Workshop Funding
- User Involvement Funding
- CLARIN Training Calls
- CLARIN Seed Grants
- Mobility Grants





# Network

2. The central CLARIN office and the national consortia can provide **support for preparing EU-funded Projects:**

- Help for *networking* and *documentation*
- *Assistance* in writing the proposal
- *Seed grants*: a small grant that can be used to cover certain costs coming with the preparation of a project proposal
- Facilitation services regarding the Open Science and FAIR Data requirements.

# Involvement of CLARIN in current European research projects

Since 2015, CLARIN ERIC has been participating as partner in European projects funded by the European Commission and addressing topics related to research infrastructures, mostly in the Horizon 2020 programme.

<b>ELE</b>	European Language Equality for Collaboration	ADAPT Centre	2021-01-2022-06
<b>ENRIITC</b>	European Network of Research Infrastructures & Industry for Collaboration	ESS	2020-01-2022-12
<b>EOSC Future</b>	EOSC-FUTURE aims to combine various initiatives and projects in the field of EOSC (European Open Science Cloud) development.		2021-04-2023-09
<b>ERIC Forum</b>	ERIC Forum Implementation Project	BBMRI	2019-01-2023-12
<b>EUROPEANA-DSI</b>	Develop Europeana as a Digital Service Infrastructure (DSI-4)	Europeana Foundation	2018-09-2020-08
<b>SSHOC</b>	Social Sciences & Humanities Open Cloud	CESSDA	2019-01-2022-04
<b>TRIPLE</b>	Transforming Research through Innovative Practices for Linked interdisciplinary Exploration	CNRS	2019-10-2023-04
<b>UPSKILLS</b>	UPgrading the SKills of Linguistics and Language Students	Universita ta Malta	2020-09 - 2023-08

# Resource Families

## Introduction

The aim of the CLARIN Resource Families initiative is to provide a user-friendly overview per data type of the available language resources in the CLARIN infrastructure for researchers from the digital humanities, social sciences and human language technologies. The overviews are meant to facilitate comparative research and the listings are sorted by language.

The listings for each family include the most important metadata and brief descriptions, such as resource size, text sources, time periods, annotations and licences as well as links to download pages and concordancers. In addition to the resources found in the CLARIN infrastructure, an overview is provided of other existing valuable language resources which have not yet been integrated into the infrastructure.

The listings also provide hyperlinks to other relevant materials, such as the thematic CLARIN workshops and tutorials and their accompanying videolectures, as well as a list of key publications on the resources surveyed.

Currently, overviews are available for 12 corpora families, 5 families of lexical resources, and 4 tool families. See below. For information about applying for funding for small projects that can help to extend the scope of the initiative, see <https://www.clarin.eu/content/clarin-resource-families-project-funding>.

### Corpora

- [Computer-mediated communication corpora](#)
- [Corpora of academic texts](#)
- [Historical corpora](#)
- [L2 learner corpora](#)
- [Literary corpora](#)

### Lexical Resources

- [Lexica](#)
- [Dictionaries](#)
- [Conceptual Resources](#)
- [Glossaries](#)
- [Wordlists](#)

### Tools

- [Normalization](#)
- [Named entity recognition](#)
- [Part-of-speech tagging and lemmatization](#)
- [Tools for sentiment analysis](#)

### Resource families

- [CMC corpora](#)
- [Historical corpora](#)
- [L2 corpora](#)
- [Manually annotated corpora](#)
- [Multimodal corpora](#)
- [Newspaper corpora](#)
- [Parallel corpora](#)
- [Parliamentary corpora](#)
- [Reference corpora](#)
- [Spoken corpora](#)
- [Lexica](#)
- [Dictionaries](#)
- [Conceptual resources](#)
- [Glossaries](#)
- [Wordlists](#)
- [Tools for normalization](#)
- [Tools for named entity recognition](#)



# What is CLARIN-CH?



CLARIN-CH is the Swiss node of CLARIN Europe.

Concretely, CLARIN-CH is a network of six Swiss academic institutions, supported by the ASSH, who founded the *CLARIN-CH Consortium* in December 2020.

## What is CLARIN-CH?







# Our mission

Join the European CLARIN community, and build an active and impactful national network.

## Objectives

1. Obtain Switzerland's CLARIN membership and give Swiss researchers access to the entire CLARIN infrastructure.
2. Foster the sharing of expertise and of resources.
3. Bring together the Swiss community using language resources and create national working groups.
4. Encourage the initiation of national and international collaborations.

In Switzerland, we  
target the creation of:

one B-center

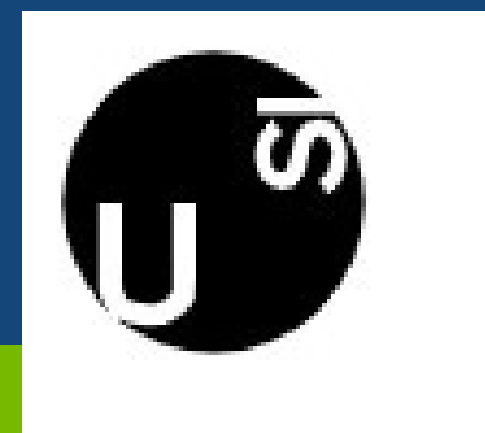


University of  
Zurich<sup>UZH</sup>

LiRI - Linguistic Research Infrastructure

several K-centers

discipline specific  
working groups



# Linguistic Research Infrastructure - LiRI

LiRI is the national research infrastructure included in SERI's 2021-2024 Roadmap for Research Infrastructures. LiRI:

- Provides expert support for data management, text processing, and database engineering, as well as statistical consulting services.
  - **Laboratory facilities** for linguistic research and technical infrastructure for the analysis of language and speech (e.g. experiments set up with the Gorilla software).
  - **Collection of naturalistic data** in a methodologically rigorous fashion, similar to laboratory conditions.
  - Access upon institutional subscription: <https://www.liri.uzh.ch/en/services/Regulations.html>
- Launched the **Swissdox database** with press articles.
- Collaborates with **SWISSUbase** to provide long-term data archiving services.

# Swissdox@LiRI and SWISSUbase

## Swissdox@LiRI

- 29 million media articles (press, online) from a wide range of Swiss media sources covering many decades.
- Updated daily with about 5'000 to 6'000 new articles from the German and French speaking parts of Switzerland.
- Designed for big data analyses.
- Data may be enriched optionally, automatically processed and analyzed.
- Access upon institutional subscription:  
<https://www.liri.uzh.ch/en/services/swissdox.html>

## SWISSUbase

- A platform proposing archiving, data curation and data publication services starting with June 2022.
- It draws on the FORSbase platform, an existing national archive solution for Swiss social science research data.
- Access to services: free to the CLARIN-CH community until 2024.
- Partners: FORS, UNIL, LiRI/UZH, SWITCH, Swissuniversities
- !!!! Free online webinar to introduce the SWISSUbase on March 31 from 1 to 2pm.  
Register: <https://lnkd.in/e3adnaCk>

<https://www.liri.uzh.ch>

Dr. Agnes Kolmer: [info.liri@linguistik.uzh.ch](mailto:info.liri@linguistik.uzh.ch)

<https://info.swissubase.ch/>

Florian Steurer: [swissubase@ub.uzh.ch](mailto:swissubase@ub.uzh.ch)

# Foster the sharing of expertise



Dialectology  
Sociolinguistics  
Language ideologies  
Pragmatics  
Psycholinguistics  
Discourse Studies  
Prosody and regional variation  
Semiology  
Corpus Linguistics  
Historical Linguistics  
Bilingualism  
Linguistic Anthropology  
Engendered languages  
Digital Humanities



Language variation  
Language change  
Conversational analysis  
Linguistic narrativity  
Spanish linguistics  
Italian language and culture  
Epistemology  
Dialectology  
Slavistics  
Stylistics  
Media discourse  
Language sound structure  
Computational linguistics  
Language teaching  
Digital Humanities



Cognitive Linguistics  
Corpus Linguistics  
Historical Linguistics  
Language teaching  
Dialectology  
Interactional Linguistics  
Discourse Studies  
Pragmatics  
Semantics  
Developmental pragmatics  
Cognitive anthropology  
Cognitive sociology  
Speech therapy  
Language pathologies  
Corpus statistics



Digital literacy  
Language teaching  
Political Linguistics  
Legal Linguistics  
Swiss German Sign Language  
Institutional Communication  
Social multilingualism  
Professional translation  
Audio description  
Multimodal communication  
Information design  
Journalism  
Media Linguistics  
NLP, Machine Learning  
Deep Learning

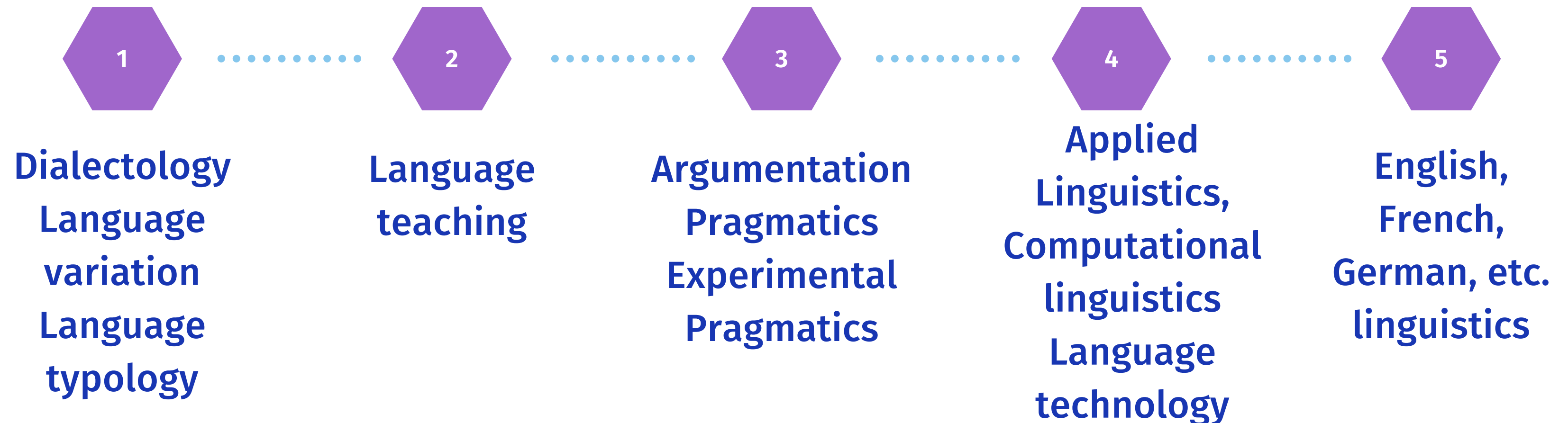


Discourse Studies  
Argumentation  
Persuasion  
Intercultural pragmatics  
Financial Communication  
Semantics  
Multimodality  
Bilingualism  
Italian Linguistics  
Applied Linguistics  
Stylistics



# Foster the sharing of expertise and encourage collaborations

## Discipline specific national working groups: examples



# Digital literacy in university contexts (DigLit)

As digitalisation progresses, new technologies can offer valuable support to academic writers. However, research and practice show that students and their lecturers are often not aware of the applicability of available tools and are unable to exploit their full potential. These are the issues addressed by the DigLit project, supported by swissuniversities and the partner institutions.

**Leading house:** ZHAW School of Applied Linguistics

**Project financing:** P-8 Digital Skills programme, coordinated by swissuniversities and the partner universities

**Overall budget:** CHF 2.06 million

**Project duration:** January 2021 – December 2024



swissuniversities



# Support we need to create Working Groups

- Manifest your interest to the CLARIN-CH representant from your institution.
- Discuss your interest with other colleagues.
- Start from already existing collaborations.
- Contact the CLARIN-CH coordination office to help establishing a collaboration at the national level.

In this way, we can work together from the beginning to develop a national network suitable for the needs of every interested discipline and to gather our resources in a sustainable, open and interoperable way.

**Discipline-specific  
Working Groups**



**Future  
CLARIN K-centers**

# Foster the sharing of resources: corpora and databases



- Interrogation Programme & Supersenses Extraction (IT)
- Lyra database (IT)
- ENIAT database (Slavic and South Asian Languages)
- FLORALE database (audio, FR)
- Phonocolor.ch (FR L2)
- COSUIZA (SP)
- COLESfran (SP)
- Dialectos del español
- Fueros medievales
- Mapa del español en Suiza



- ORFEUS databasis (FR)
- Glossaire de la Suisse Romande (FR)
- OFROM (audio and transcribed, FR)



- Swiss Web Corpus for Applied Linguistics (multilingual)



- Ortsnamen.ch/toponymes.ch (Swiss and international toponymy)
- Schweizer Textcorpus (DE)
- Schweizerisches Idiotikon (Swiss German)
- Vocabolario dei dialetti della Svizzera italiana (IT)
- Dicziunari Rumantsch Grischun (Romansh)
- Medieval Latin Dictionary
- Thesaurus linguae Latinae (ancient Latin)
- Historical Dictionary of Switzerland (DE, FR, IT)
- Collocation dictionary (DE)
- OLdPhras (DE)

# Foster the sharing of resources: corpora and databases

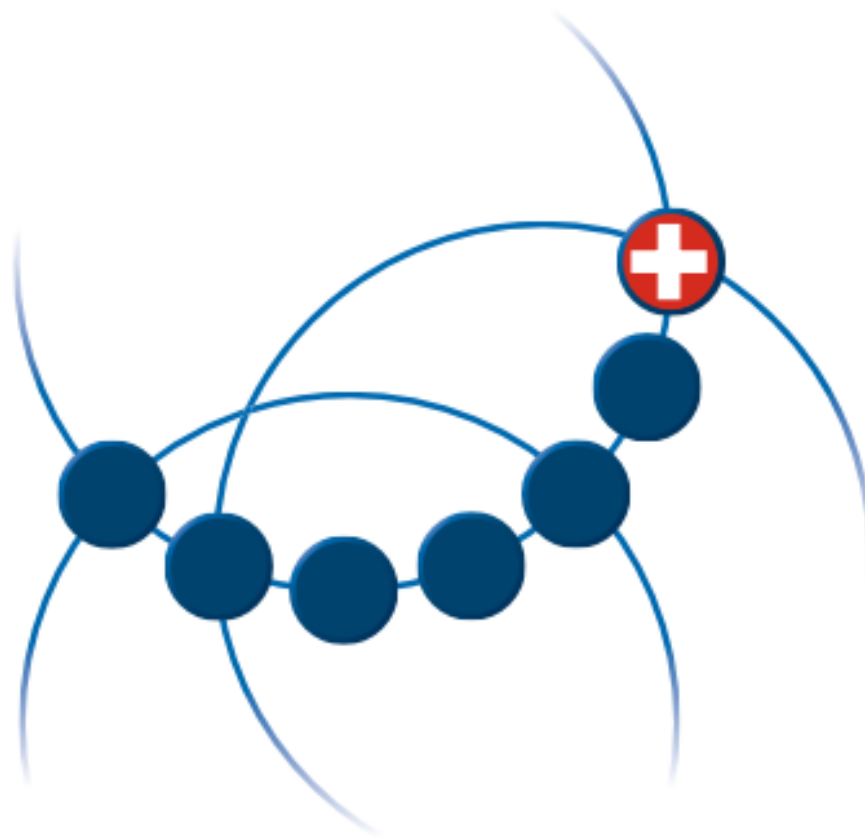


- BNC Dependency Bank (EN)
- Giessen-Long Beach Chaplin Corpus (EN)
- Zurich English Newspaper
- International Corpus of English
- PADLF-Les plus anciens documents linguistiques de la France (FR)
- Tzéro database (FR)
- SenS-Korpus (DE)
- Archimob (DE)
- Picture postcard corpus (DE)
- DAVADS -Digital Audio/Video Archive (DE)
- Metalanguage Discourses (DE)
- Zurich summer 1968 (DE)
- Temporal entity extraction from historical texts (DE)
- JAKOB lexicon (DE)
- SADS-Syntactic Atlas of German-speaking Switzerland
- bulletin4corpus (DE, FR, IT, EN)
- sms4science (DE, FR, IT, Romansh)
- SMULTRON-Stockholm Multilingual Treebank (Swiss German, DE, IT, FR, Romansh)
- eSSRQ-Electronic Collection of Swiss Legal Sources (FR, IT, DE, Romansh, Latin)
- Phonogram Archives (Swiss dialects)
- Text+Berg corpus (Swiss German, DE, IT, FR, EN, Romansh)
- Bullinger Digital corpus (DE, Latin)
- CoNTra: the Federal Gazette (parallel FR-DE)
- PHOIBLE database (more than 1000 languages)
- Chintang Language Corpus
- Nepali National Corpus
- SEAlang corpus (South Asian languages)
- Corporum (Latin)
- European Language Equity resource collection (~60 corpora, ~40 applications, some lexica) (DE, IT, FR, Romansh)
- Genes and Languages Together database
- AUTOTYP database
- Macedonian Spoken Corpus
- Pre-Standardized Balkan Slavic Literature
- Torlak (a language from Timok area)
- Serbian Forms of Address (Serbian)



# CLARIN-CH

Common Language Resources and  
Technology Infrastructure



**Why get involved?  
What are the benefits?**

# At the institutional level

- **Increased international visibility** for Swiss corpus-based projects, corpora and linguistic databases, tools, etc.

---

- **International standards** and **interoperability** in the construction of national databases and infrastructure.

---

- **Involvement in European infrastructure programs and flagship-projects** in Linguistics and its various sub-fields, Natural Language Processing, Machine Translation, etc.

---

- **Cost reductions** – by sharing resources nationally and internationally, the effective costs invested for creating new linguistic databases and developing annotation and query tools are diminished.

# At the individual level

- Access to all CLARIN's **resources, tools** and **services**

---

- Access to CLARIN's **knowledge infrastructure**, which secures a continuous transfer of knowledge and expertise between all members.

---

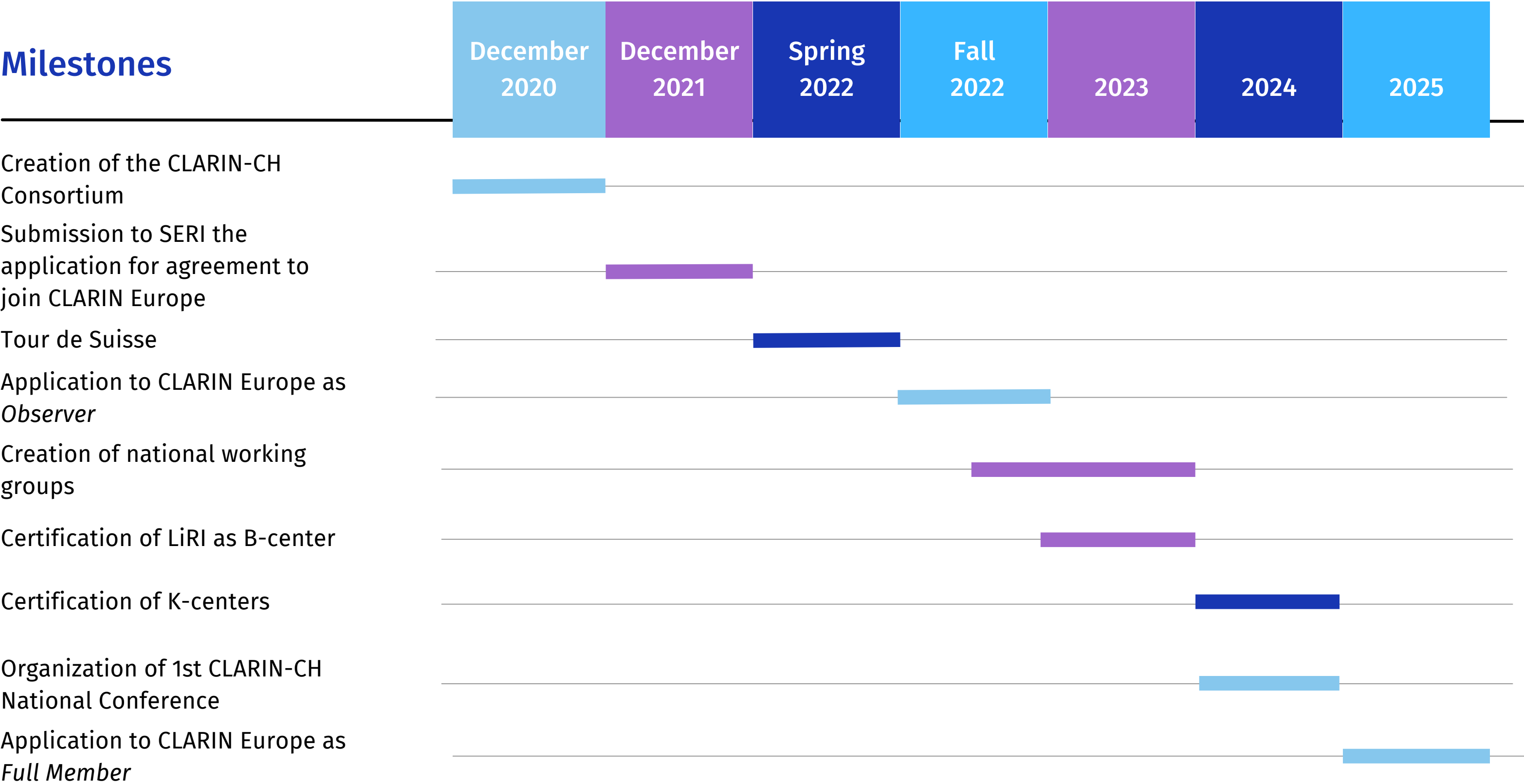
- **European funding** for training and scientific events for sharing technical expertise and know-how in building the CLARIN infrastructure and to reinforce international collaborations.

---

- **Support** for networking, documentation, and assistance in writing project proposals provided by the central office and the CLARIN members.

# Our roadmap until 2025

## Milestones



## Take home messages:

- CLARIN is a community: a networked federation of centers.
- CLARIN-CH is a consortium of scholars targetting the development of an active and impactful Swiss CLARIN community.
- CLARIN and CLARIN-CH are based on networking and sharing of expertise, resources, and tools.
- Researchers are both service-users and service-providers.
- Conducting research with digital language and text data can be challenging at the individual level, but much easier at the collective level.



# Meet the founding members of the CLARIN-CH Consortium



**Marianne Hundt**

National Coordinator  
Representative of UZH



**Anita Auer**

President  
Representative of UNIL



**Cristina Grisot**

Scientific Coordinator



**Sandrine Zufferey**

Representative of UNIBE



**Martin Hilpert**

Representative of UNINE



**Andrea Rocci**

Representative of USI



**Cerstin Mahlow**

Representative of ZHAW

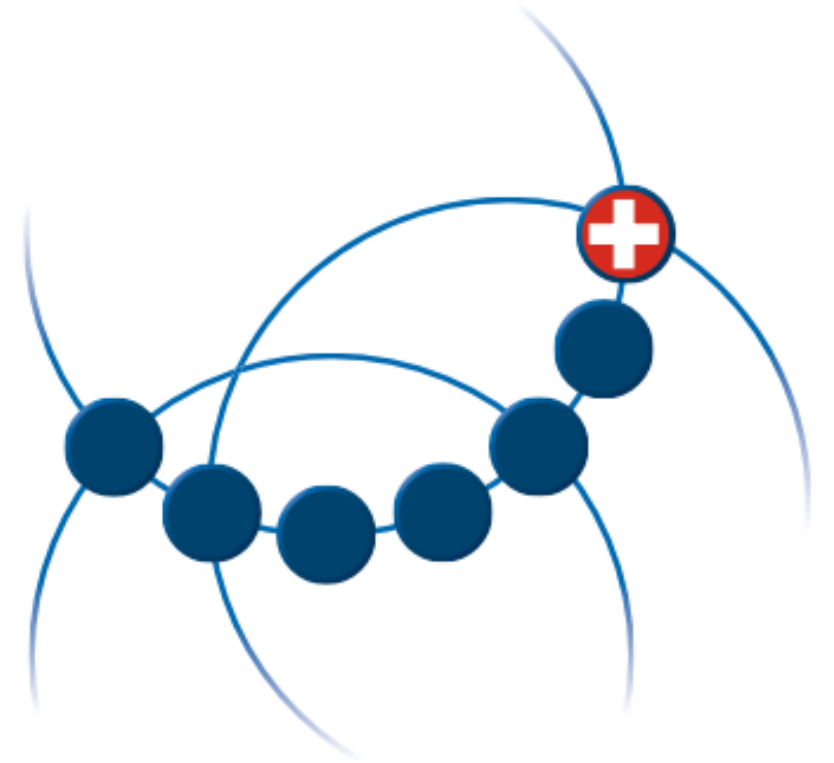


**Beat Immenhauser**

Representative of SAGW/ASSH

# CLARIN-CH

Common Language Resources and  
Technology Infrastructure



# Thank you!

**EMAIL**

[cristina.grisot@uzh.ch](mailto:cristina.grisot@uzh.ch)

**WEB**

<https://clarin.eu>

Currently: <https://clarin-ch.linguistik.uzh.ch>

Soon will become: <https://clarin-ch.ch>